



**RED - RUBY™**

BY **OSSEUS™**

**REVISABLE**

Proprietary anchor retraction system makes revisions a reality.

**STREAMLINED**

User friendly, intuitive instrumentation simplifies procedures.

**LOW PROFILE**

Zero-profile construct helps minimize anatomic disruption.

**PRE-PACKED**

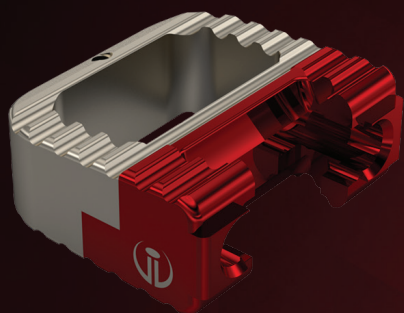
Individual packaging simplifies preparation and ensures sterility.



The Red Ruby ACI is an anchored cervical interbody that streamlines cervical fusions by combining multiple complex procedural steps into a quick and easy solution. Its proprietary retractable anchoring system offers greater anti-migration security, with the ability to revise if necessary.

## TECHNICAL SPECIFICATIONS

### RED RUBY IMPLANT (16mm x 14mm, 5° lordosis)

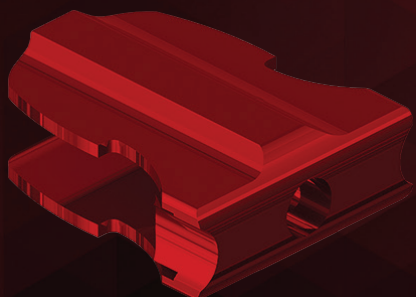


#### IMPLANT HEIGHT

#### GRAFT VOLUME

5mm	.40cc
6mm	.48cc
7mm	.55cc
8mm	.62cc
9mm	.70cc
10mm	.77cc

### RED RUBY ANCHOR



#### IMPLANT HEIGHT

#### ANCHOR SIZE

#### PURCHASE DEPTH

5mm	Short	5.5mm
6mm	Short	5.0mm
7mm	Short	4.5mm
8mm	Long	5.5mm
9mm	Long	5.0mm
10mm	Long	4.5mm

The Red Ruby ACI is to be used with supplemental fixation, i.e. an anterior cervical plate. Red Ruby ACI is manufactured by Incite Innovation, LLC and distributed by Osseus Fusion Systems.